

Laylah Ali

Cory Arcangel

Brendan Bannon

Roberley Bell

Diane Bertolo

Jake Berthot

Harvey Breverman

Charles Burchfield

Philip Burke

Lawrence Calcagno

Ellen Carey

Wendell Castle

Charles Clough

Alan Cober

Ralston Crawford

Allan D’Arcangelo

Edwin Dickinson

Nancy Dwyer

Marion Faller

Alexis Jean Fournier

Hollis Frampton

Duayne Hatchett



Jenny Holzer

Josh Iguchi

Jed Jackson

Les Krims

Bruce Kurland

Justine Kurland

Robert Longo

Magda Cordell McHale

Julian Montague

Elizabeth Murray

Ken Price

Ad Reinhardt

Milton Rogovin

Susan Rothenberg

Christy Rupp

Paul Sharits

Cindy Sherman

Eugene Speicher

Doug and Mike Starn

Martha Visser’t Hooft

Carson Waterman

John Yerger

Michael Zwack

PASSION & PATRONAGE

**Select Gifts from the
GERALD MEAD
COLLECTION**

CASTELLANI
ART MUSEUM
OF NIAGARA UNIVERSITY

Introduction and Statements

Passion and Patronage: Select Gifts from the Gerald Mead Collection consists of a selection of artworks from a major gift of 58 works, in all media, by 46 nationally and internationally acclaimed artists from the collection of noted Buffalo, New York art collector and patron Gerald Mead. The works in this gift were selected from Mead's collection of over 1,400 artworks for their suitability for the Castellani Art Museum of Niagara University's collection and their ability to enrich the educational mission of the museum.

The role of private collectors, exemplified by Mead, in supporting the arts is paramount to the strength and integrity of our artistic heritage and integrity of the creative process. This exhibition emphasizes, in a tangible manner, the process by which "private" artworks eventually become "public," a vital component in the building of museum collections.

Mead, described by the *Buffalo News* as "a guiding and indispensable figure on the Western New York arts scene," was influenced by prominent collectors and art museum patrons including Armand and Eleanor Castellani, Seymour Knox and Charles Rand Penney. With regular visits to museums and galleries in the region, Mead fortified his understanding of art as well as his familiarity with many of the artists whose work builds our own regional art history. Collecting for well over thirty years, Mead has refined his well-practiced

In 2003, I organized a film series for the Niagara University community featuring movies directed by artists represented in the CAM collection. This included Cindy Sherman's *Office Killer* and *Johnny Mnemonic*, directed by Robert Longo. When I mentioned this project to Jerry Mead, he offered to lend four prints from the *Mnemonic Pictures* series—lithographs based on stills from the film—from his own collection for a pop-up exhibition to accompany the screening. These, along with other Longo works from the CAM collection, added depth to our efforts to illustrate connections to pop culture, demonstrating, for example, the few degrees of separation between the CAM and Keanu Reeves' cyberpunk courier. Today, I'm delighted to know that Jerry's gift to the museum includes two of the *Johnny Mnemonic* prints—reuniting them with the first two he donated after the 2003 exhibition—as well as photographs by Cindy Sherman. This gift is but one example of Jerry's thoughtfulness and generosity as an artist, educator, collector, and supporter of Western New York cultural institutions.

Eric Jackson-Forsberg CAM Curator of Collections and Exhibitions, 2000-2003; Content Manager, Superstructures Engineers + Architects, Current

connoisseurship of visual culture—actively lending and donating to public institutions, and hoping to inspire others by his example. The student has become the teacher and the circle of cultural sustainability continues.

"Gerald Mead's collection is thoughtfully assembled, particularly in regard to the historical strengths of artistic practice in Western New York. It reminds us that great art is all around, and that is particularly true in Buffalo."

MOLLY DONOVAN
Curator of Art, National Gallery of Art, Washington, DC

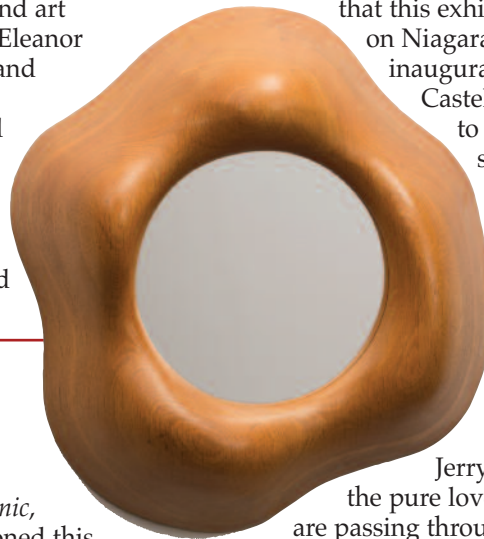
This generous gift includes artworks by significant contemporary artists not represented in the museum's collection as well as works by artists represented in the collection with the intention of broadening the range and depth of their careers in the museum's holdings.

An exhibition, featuring all the artworks in the gift, will be presented in 2022 accompanied by a full catalog. Above and beyond the generosity of this superb gift, Mead has also endowed Niagara University with the *Gerald C. Mead, Jr.*

Scholarship in Art History with Museum Studies.

Mead's enduring passion for the arts and his longtime and continued patronage of the Castellani Art Museum and Niagara University are most greatly appreciated. We hope that this exhibition, his recent appointment to serve on Niagara University's Board of Advisors and his inaugural membership in the newly launched Castellani Art Museum Legacy Society can begin to reflect our appreciation for his continued service to the Castellani Art Museum and Niagara University.

Michael J. Beam Interim Director & Curator of Exhibitions and Special Projects, Castellani Art Museum of Niagara University



Wendell Castle, *Untitled* (stack laminated wood mirror), c. 1970, oak with mirror

Jerry Mead once observed, "If you collect just for the pure love of what you think is good, and these people are passing through the area, just by happenstance down the road, some of the artists will go on to international success." Those are words for collectors to live by. Mead's generous donation to the Castellani Art Museum is made up of works

"Over the course of many years, Gerald Mead has collected some of the finest work created by artists who come from or live in our region. His collection reveals an astute eye and thoughtful curatorial sensibility."

LOUIS GRACHOS
Former Director,
Abright-Knox Art Gallery,
Buffalo, NY

from significant contemporary artists, many with unquestioned international reputations. Interesting works by Christy Rupp, Nancy Dwyer, Robert Longo, Cindy Sherman, and Charles Burchfield add depth to existing holdings and help tell a better story. His donation of works by Laylah Ali, Cory Arcangel, Harvey Breverman, Philip Burke, Hollis Frampton, and Wendell Castle, just to name a few, add important artists who were previously unrepresented in the museum's collections. Many visitors to the Castellani have never even visited an art museum before and have no idea what to expect. Thanks to the prescience and adventurous spirit of

Jerry Mead, those visitors, as well as Castellani regulars, have fresh surprises in store.

Elizabeth Licata CAM Curator, 1991-1999
Editor-in-Chief, *Buffalo Spree*, Current

Cover: Complete listing of the artists represented in the gift; artists indicated in **bold** are featured in this selection exhibition. **Clockwise from top left (details):** Charles E. Burchfield, *Untitled* (June 1916), 1916, watercolor on paper, 12 x 9 in.; Edwin Dickinson, *Untitled* (Paris, France), 1920, watercolor on paper, 9½ x 13½ in.; Nancy Dwyer, *Bright Idea*, 1991, painted aluminum with light bulb fixture, light bulb and caster wheels, ed. 5/40, 16 x 15 x 16 in.; Elizabeth Murray, *Charlotte* (*Poetry Project Print*), 1998, eight-color lithograph, ed. 23/90, 12½ x 15½ in.; Cindy Sherman, *Untitled* (Under the WTC), 1980/2001, gelatin silver print, ed. 80/100, 7½ x 5½ in. and Eugene Speicher, *Still Life*, undated, oil on board, 20 x 24 in.



Ken Price, Untitled from the portfolio *Heatwaves*, 1995, serigraph, ed. PP



Starn Twins (Doug and Mike Starn), *Horses*, 1986/1993, photographic collage with cellophane tape

COLLECTOR'S BIOGRAPHY

Born in Hamburg, NY, Gerald C. Mead Jr., is a Distinguished Alumni Award recipient from Erie Community College and Young Alumnus Achievement Award recipient from Buffalo State College where he earned undergraduate degrees in Psychology (1985) and Design (1986) and has taught since 1998. He is also a Dean's Scholar of the University at Buffalo where he received his MFA in Visual Studies (2008) and taught from 2006-10. In 2020, Mead was awarded an Honorary Doctorate of Fine Arts from Niagara University.

A former longtime curator at the Burchfield Penney Art Center, Mead organized over 130 exhibitions for the museum, some of which toured nationally. The Buffalo Alliance for Education honored him with a Pathfinder Award in 2005 and in 2007 he received a Community Leader in the Arts Award from the National Federation For Just Communities of Western New York. In 2015, Arts Services Initiative of Western New York honored him with their Unsung Hero Award. Mead is currently an independent curator who has organized exhibitions for Artspace Buffalo, Castellani Art Museum, CEPA Gallery, Charles E. Burchfield Nature & Art Center and Kenan Center.



Jenny Holzer, *Survival Series: Use What is Dominant in a Culture to Change it Quickly*, 2003, hand-blown, etched glass, ed. 130/200



Laylah Ali, Untitled (Portrait), 2017, mixed media on paper

Listed in *Who's Who in America*, Mead is a past surveyor for the American Alliance of Museums and current appointed member of the Buffalo Arts Commission and he has served on boards of numerous regional art organizations. He is a leading authority on WNY art who has lectured at Cambridge University and Chautauqua Institution and his writing has been published in *Afterimage: The Journal of Media Arts and Cultural Criticism*, *Artvoice* and *Buffalo Spree* magazine.

Mead's own artworks are in the collections of the Albright-Knox Art Gallery, Castellani Art Museum, George Eastman Museum, Harper International, Sprint Foundation, and the International Museum of Collage, Assemblage and Construction among others, have been in exhibitions throughout the U.S. and in Australia, England, Poland, Russia and China and are published in six collegiate textbooks. He has also received grants for his work from the New York Foundation of the Arts and the New York State Council on the Arts.

Since 1987, Mead has assembled an encyclopedic collection of over 1,400 historic and contemporary artworks by artists associated with this region by birth or residency. Beginning in 2002, over 50 thematic exhibitions have been organized from the Gerald Mead Collection and presented at universities, colleges and cultural organizations throughout WNY and in Pennsylvania. Works from the collection have also been lent for major exhibitions at the Albright-Knox Art Gallery, Arnot Art Museum, Burchfield Penney Art Center, Castellani Art Museum, CEPA Gallery, Rochester Institute of Technology, University at Buffalo Art Galleries, and the University of London.



ACCOMPANYING PROGRAMMING: LECTURE AND COLLECTOR TOUR Date to be determined.

As part of the museum's *Meet Me at the CAM* lecture series focusing on women artists in Western New York this year, collector Gerald Mead will discuss the women artists whose work is included in his gift.

ILLUSTRATED EXHIBITION CHECKLIST

All works are promised gift of Gerald Mead, Jr., unless otherwise noted.



Laylah Ali (b. 1968), *Untitled (Portrait)*, 2017, mixed media on paper, 8 x 5 in.



Cory Arcangel (b. 1978), *Titled No. III*, 2012, lithograph on paper, ed. 107/150, 11x8½ in.



Brendan Bannon (b. 1970), *South Sudan Refugee Camp*, 2015, digital print, 11¼ x 18 in. **(on view in the TOPS Gallery)**



Roberley Bell (b. 1955), *Element #25* from *Disputed Territories (Pitcher)*, 1996, tin pitcher, Densite, graphite, 38x9x8 in.



Charles Burchfield (1893-1967), *Untitled (June 1916)*, 1916, watercolor on paper, 12 x 9 in.



Charles Burchfield (1893-1967), *Untitled (Three Trees)*, 1916, watercolor on paper, 5½ x 9 in. **(on view in the Perna Gallery)**



Philip Burke (b. 1956), *Henry Kissinger*, 1983, oil on canvas, 23 x 21 in. **(on view in the TOPS Gallery)**



Wendell Castle (1932-2018), *Untitled (stack laminated wood mirror)*, c. 1970, oak with mirror, 16¼ x 15 x 5½ in.



Edwin Dickinson (1891-1978), *Untitled (Paris, France)*, 1920, watercolor on paper, 9½ x 13½ in.



Nancy Dwyer (b. 1954), *Bright Idea*, 1991, painted aluminum with lightbulb fixture, light bulb and caster wheels, ed. 5/40, 16x15 x 16 in. **(on view in the DiMino Sculpture Court)**



Hollis Frampton (1936-1984), *Tomato Brand Peeled Polly* from the *By Any Other Name—Series 2*, 1983, color electrostatic print, ed. 1/4, 8½x14 in.



Jenny Holzer (b. 1950), *Survival Series: Use What is Dominant in a Culture to Change it Quickly*, 2003, hand-blown, etched glass, ed. 130/200, 4x10½ x 10½ in.



Les Krims (b. 1943), *Large Camera Academic Art*, 1978, selenium toned gelatin silver print, ed. 1/25, 11x14 in.



Robert Longo (b. 1953), *Title Page* from *Mnemonic Pictures: Robert Longo 24 Frames Portfolio*, 1995, photographic lithograph, ed. A/P 14/26, 8x10 in. Castellani Art Museum of Niagara University Collection, Gift of Gerald Mead, 2003



Robert Longo (b. 1953), *Untitled D* from *Mnemonic Pictures: Robert Longo 24 Frames Portfolio*, 1995, photographic lithograph, ed. AP 14/26, 8x10 in.



Robert Longo (b. 1953), *Untitled G* from *Mnemonic Pictures: Robert Longo 24 Frames Portfolio*, 1995, photographic lithograph, ed. HC 4/25, 8x10 in.



Robert Longo (b. 1953), *Untitled N* from *Mnemonic Pictures: Robert Longo 24 Frames Portfolio*, 1995, photographic lithograph, ed. HC 4/25, 8 x 10 in. Castellani Art Museum of Niagara University Collection, Gift of Gerald Mead, 2003



Elizabeth Murray (1940-2007), *Charlotte (Poetry Project Print)*, 1998, eight-color lithograph, ed. 23/90, 12½x15½ in.



Ken Price (1935-2012), *Untitled* from the portfolio *Heatwaves*, 1995, serigraph, ed. PP, 14 x 11 in.



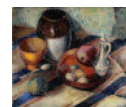
Milton Rogovin (1909-2011), *Atlas Steelworker* from *Working People* series, 1976, gelatin silver prints, triptych: (2) 7¼ x 7¼; (1) 6¼ x 6¼ in. Promised Gift of Gerald C. Mead, Jr. in memory of Nina Freudenheim.



Paul Sharits (1943-1993), *Pistol*, 1981, acrylic on canvas, 14 x 22 in.



Cindy Sherman (b. 1943), *Untitled (Under the WTC)*, 1980/2001, gelatin silver print, ed. 80/100, 7½ x 5½ in.



Eugene Speicher (1883-1962), *Still Life*, n.d., oil on board, 20 x 24 in.



Starn Twins (Doug and Mike Starn) (b. 1961), *Horses*, 1986-1993, photographic collage with cellophane tape, 7½ x 6 in.



Council on the Arts

Passion and Patronage: Select Gifts from the Gerald Mead Collection is made possible, in part, by the New York State Council on the Arts with the support of Governor Andrew M. Cuomo and the New York State Legislature.

This publication was printed in an edition of 500 on the occasion of the exhibition *Passion and Patronage: Select Gifts from the Gerald Mead Collection*, on view April 12- November 1, 2020.



CASTELLANI ART MUSEUM
OF NIAGARA UNIVERSITY
www.castellaniartmuseum.org

Museum and Shop

7 Varsity Drive, Niagara University, NY 14109, 716.286.8200
Tuesday-Saturday 11:00 a.m. - 5:00 p.m.
Closed Sundays and Mondays
Guided tours available upon request. Call 716.286.8295 for additional information.

Visit our satellite gallery at the Niagara Falls Conference Center to see the exhibition **300 Years of Niagara Falls Imagery**

Follow us